

**PROJECT PROPONENT**  
**BHOGAPURAM INTERNATIONAL AIRPORT CORPORATION LIMITED**  
 (BIACL) GOVT. OF A.P.

**JOB TITLE**  
**DEVELOPMENT OF GREEN FIELD AIRPORT AT ORVAKALLU (KURNOOL), A.P., FOR DAY VFR OPERATIONS OF ATR 72 AIRCRAFT**

**CONSULTANT**  
  
**IRITES**  
 THE INFRASTRUCTURE PEOPLE  
**AIRPORTS DIVISION**  
 (ISO - 9001 CERTIFIED)

- NOTES:-**
1. ALL DIMENSIONS ARE IN MILLIMETERS UNLESS NOTED OTHERWISE.
  2. WRITTEN DIMENSIONS ARE TO BE FOLLOWED. DRAWINGS ARE NOT TO BE SCALED.
  3. ANY DISCREPANCY IN THE DRAWING SHALL BE BROUGHT TO THE NOTICE OF THE ENGINEER.
  4. THIS DRAWING SHALL BE READ IN CONJUNCTION WITH OTHER RELEVANT DRAWINGS.

JOINERY SCHEDULE (In mts)				
TYPE	WIDTH	HEIGHT	SILL LVL	UNTEL LVL
D	0.75	2.10	+00	+2.10
DW1	2.10	2.10	+00	+2.10
W	2.22	1.20	+0.90	+2.10
V	0.60	0.60	+2.25	+2.85

**GFC**  
**Renu Khanna & Associates**  
 architect, engineers, interiors & landscape planner  
 #138, sec-10, Panchkula, Haryana India-134109  
 Ph. - +91-172-2563379 Fax. - +91-172-2584538  
 email: renukhanna.architect@yahoo.com  
<http://www.architectsrenukhanna.com/>

COMPLETION STAGE  
 CONSTRUCTION STAGE  
 TENDER STAGE  
 CONCEPTUAL STAGE

**SUPTRX**    **DATE**    **INITIALS**    **DETAILS**

**REVISIONS**

NO.	DATE	DESCRIPTION

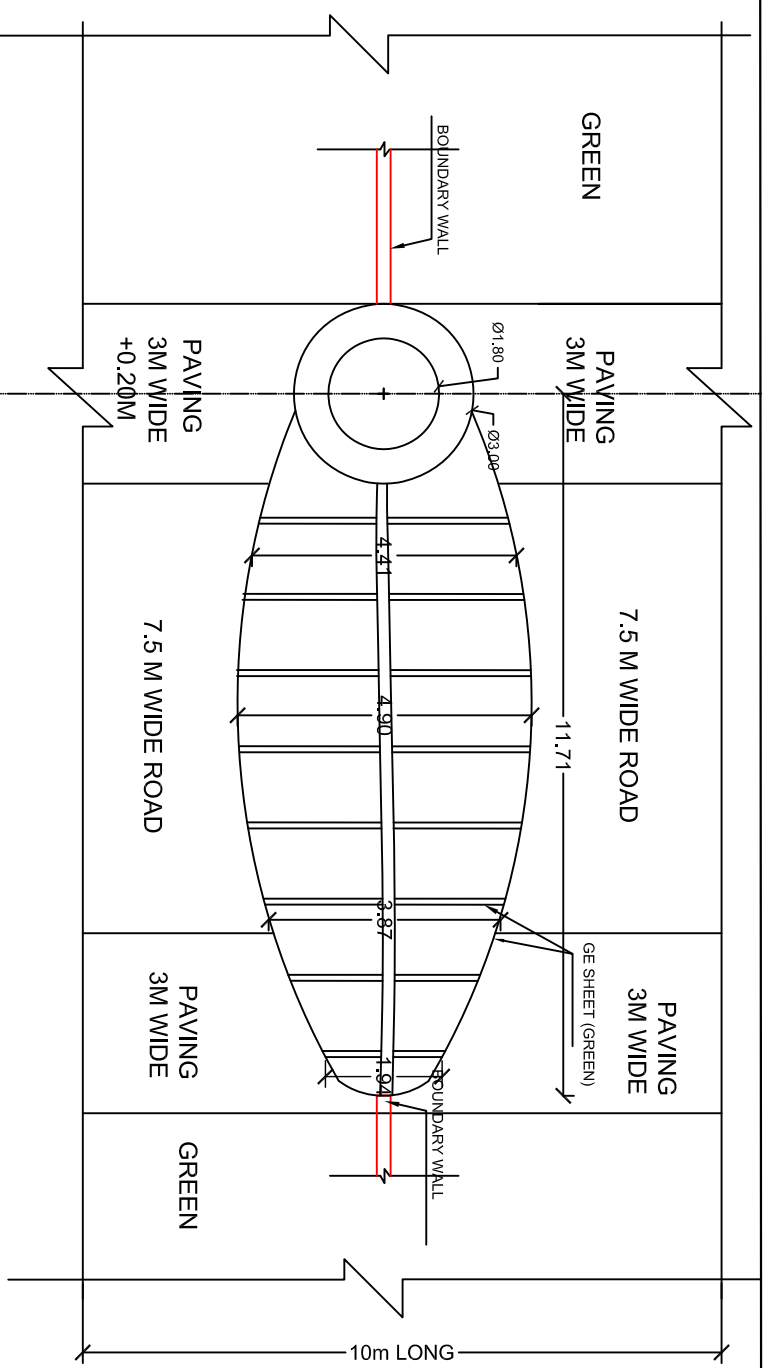
**DRAWING TITLE**  
**GATE POST PLANS & ELEVATION**

**Job No.**    **Date**  
 WD/AY/SP-01    01-06-2018  
**Scale**    **Revision**  
 NTS    SUFFR

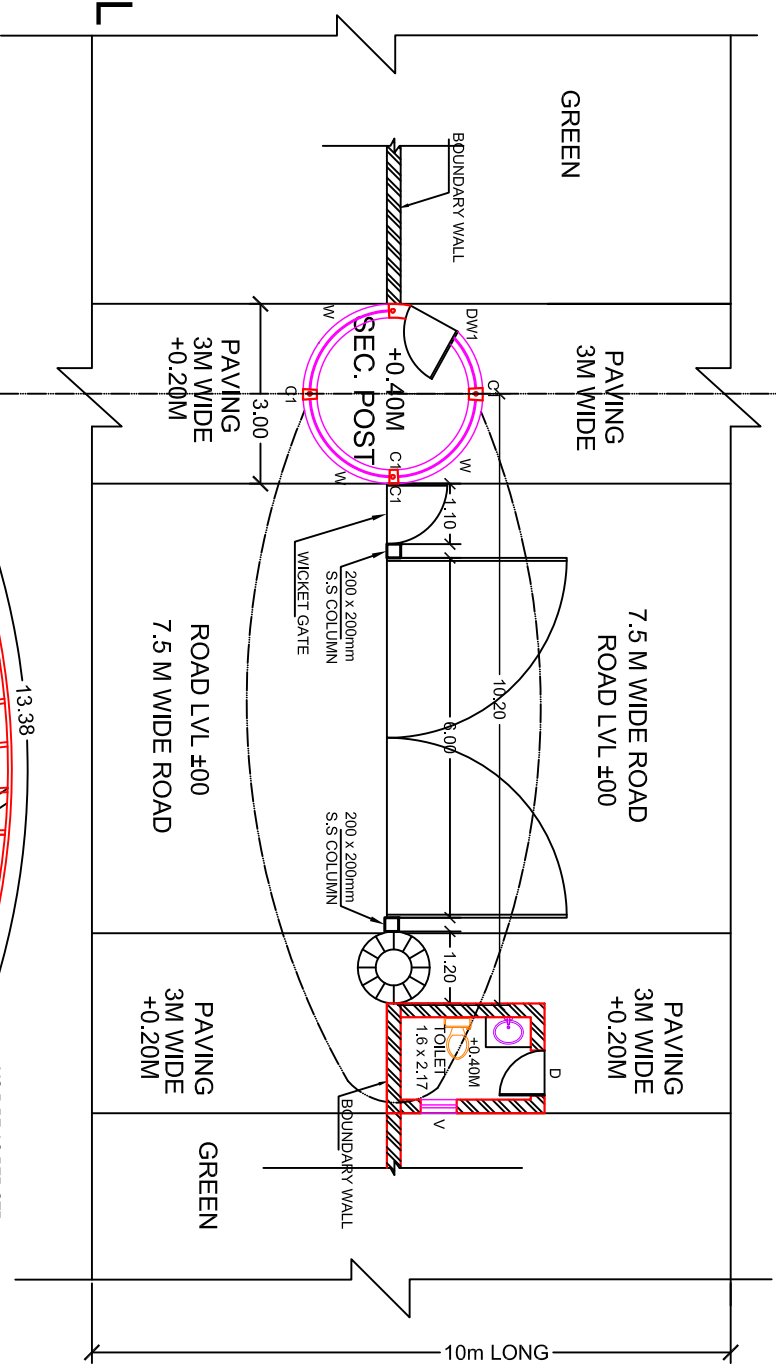
**DRWN**    **DEALT**    **CHECKED BY**    **P.COOR.**  
 R2

**COPYRIGHT**  
 THIS DRAWING IS THE PROPERTY OF RITES LTD. IT SHALL NOT BE REPRODUCED, COPIED, USED IN ANY MANNER OR HANDED OVER TO ANY OTHER PERSON OR PARTY, WITHOUT THE PRIOR PERMISSION OF RITES LTD.

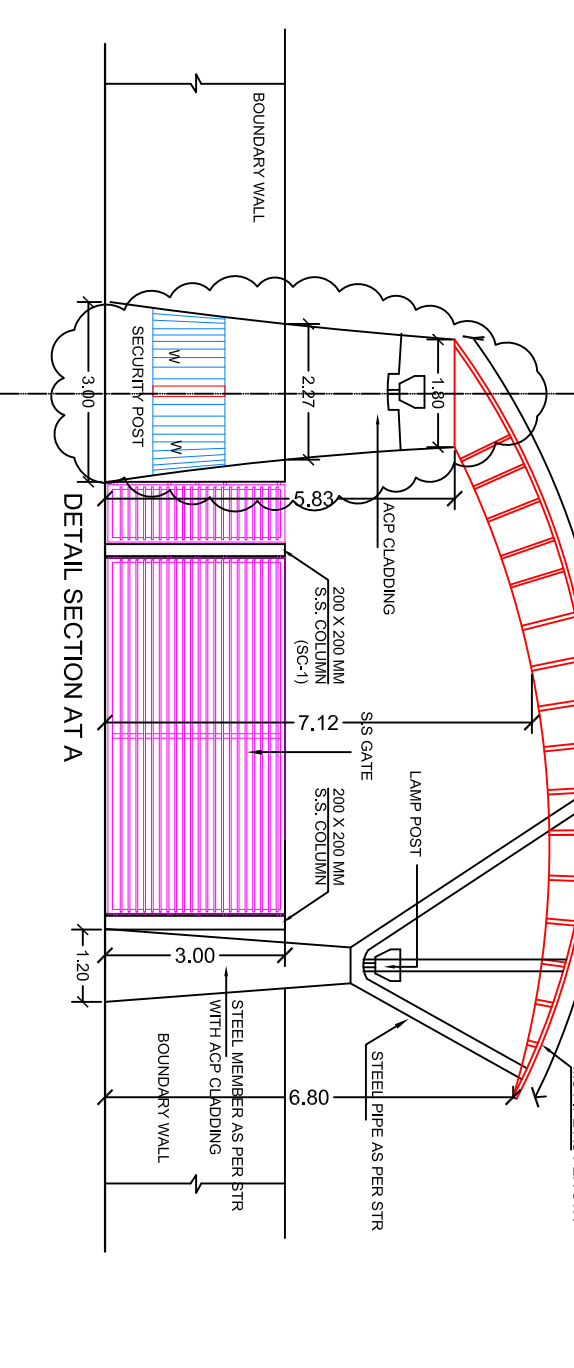
**TOP PLAN**

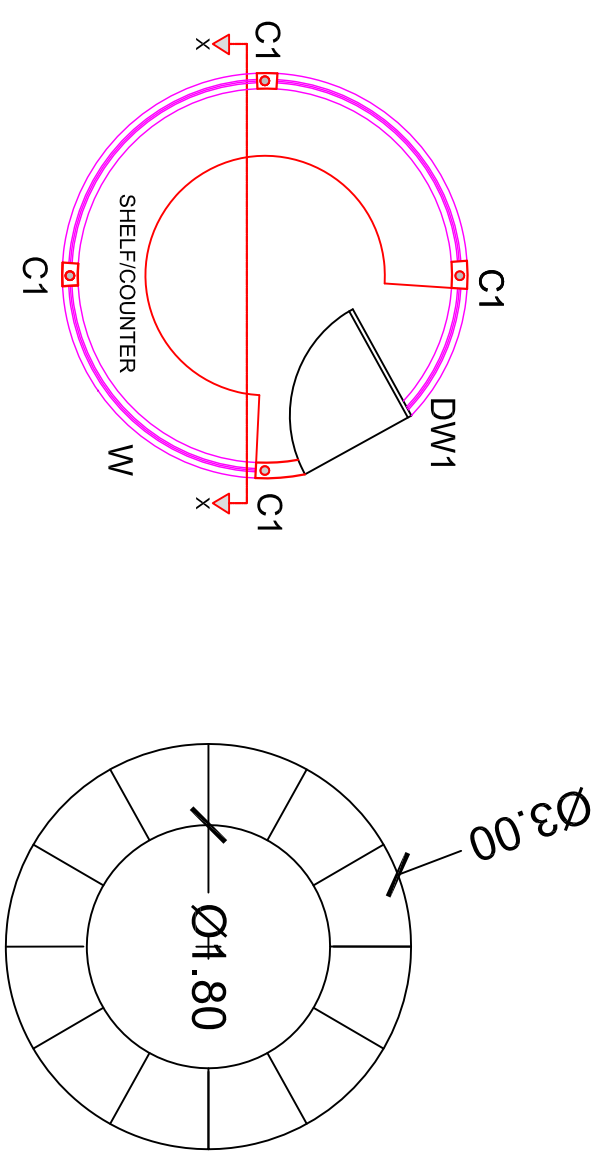


**SECTIONAL PLAN**



**ELEVATION**

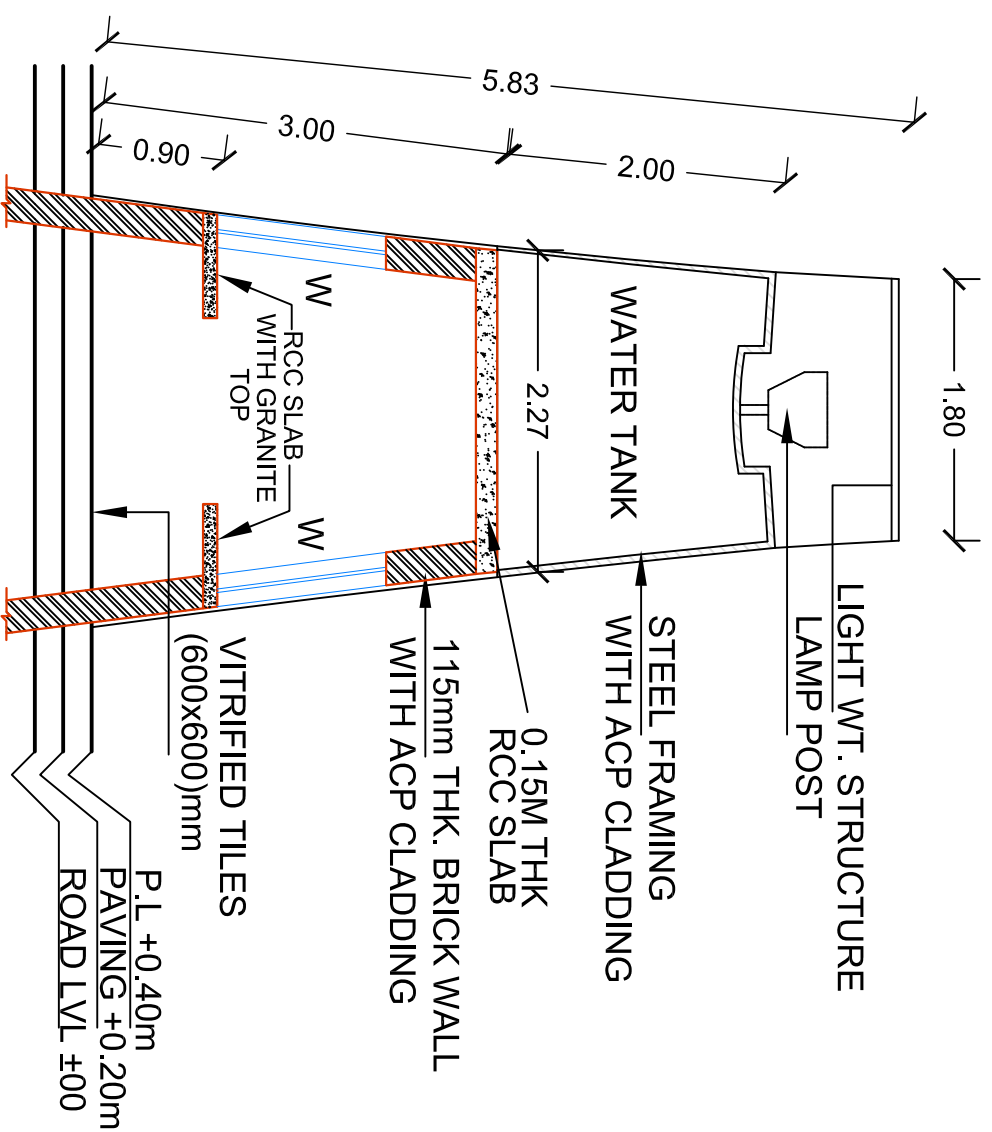




SECTIONAL PLAN

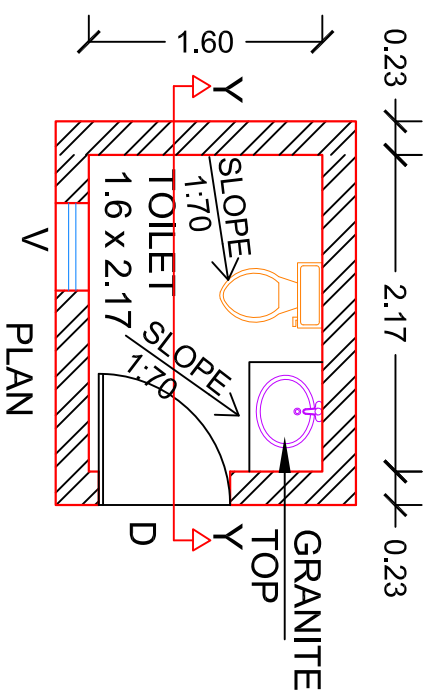
TERRACE PLAN

## SECURITY POST

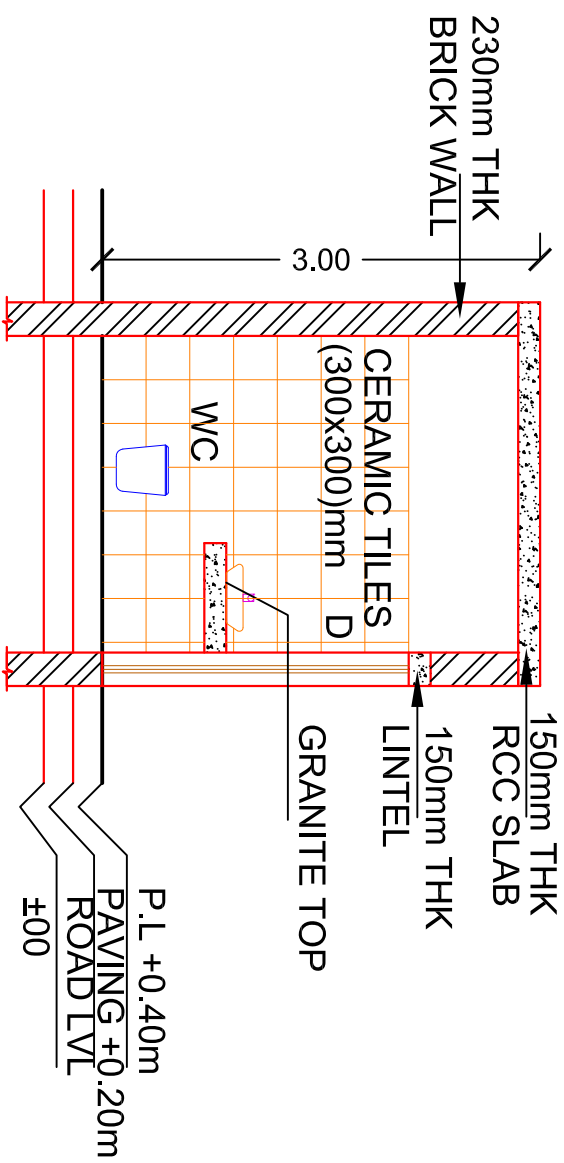


SECTION X-X'

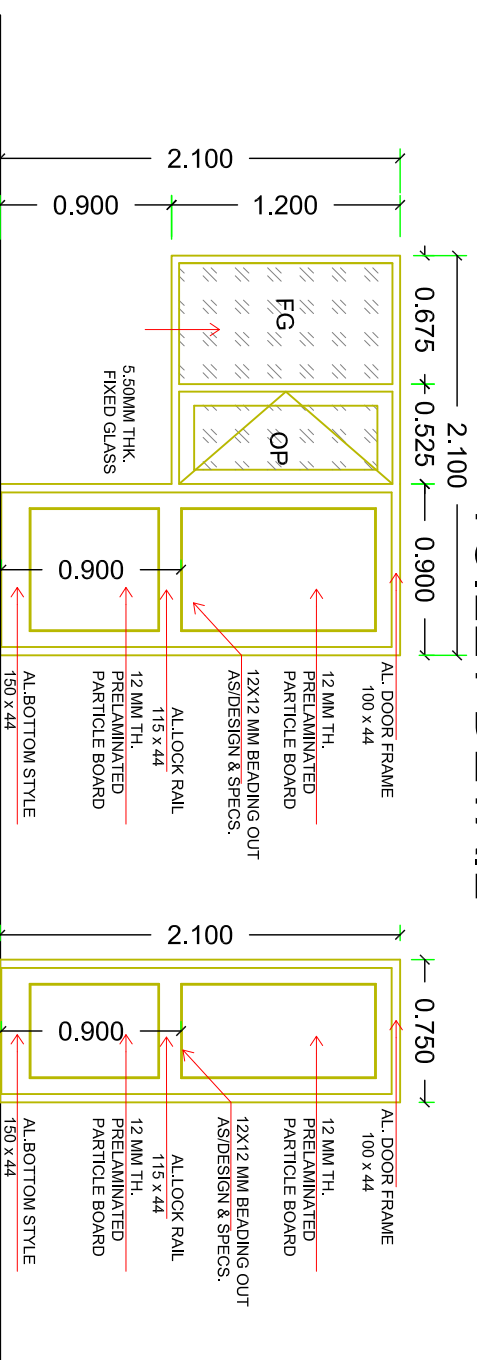
DETAIL SECTION AT A



V PLAN

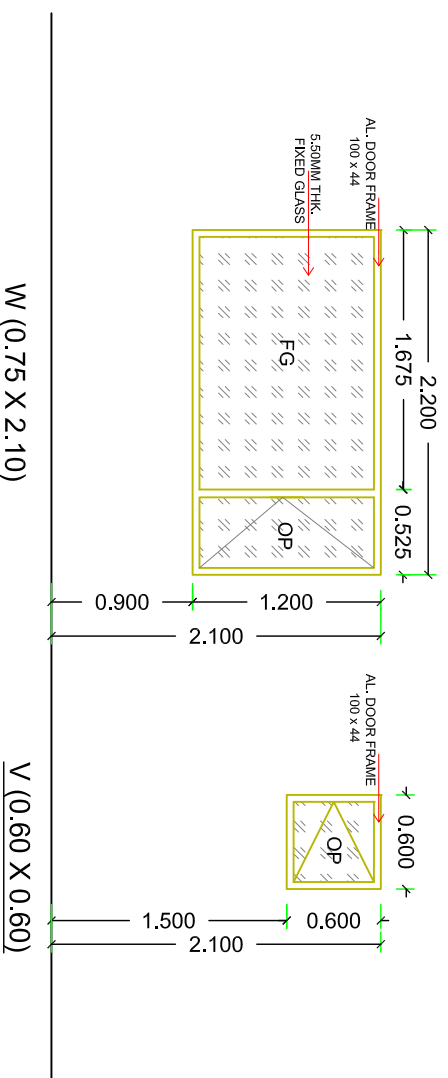


SECTION AT Y-Y  
TOILET DETAIL



DW1 (2.10 X 2.10)

D (0.75 X 2.10)



W (0.75 X 2.10)

V (0.60 X 0.60)

**PROJECT PROPONENT**  
BHO GAPURAM INTERNATIONAL AIRPORT CORPORATION LIMITED  
(BIACL) GOVT. OF A.P.

**JOB TITLE**  
DEVELOPMENT OF GREEN FIELD AIRPORT AT ORVAKALLU (KURNOOL), A.P., FOR DAY VFR OPERATIONS OF ATR 72 AIRCRAFT

**CONSULTANT**  
  
THE INFRASTRUCTURE PEOPLE  
AIRPORTS DIVISION  
(ISO - 9001 CERTIFIED)

**NOTES:-**

1. ALL DIMENSIONS ARE IN MILLIMETERS UNLESS NOTED OTHERWISE.
2. WRITTEN DIMENSIONS ARE TO BE FOLLOWED. DRAWINGS ARE NOT TO BE SCALED.
3. ANY DISCREPANCY IN THE DRAWING SHALL BE BROUGHT TO THE NOTICE OF THE ENGINEER.
4. THIS DRAWING SHALL BE READ IN CONJUNCTION WITH OTHER RELEVANT DRAWINGS.

JOINERY SCHEDULE (In mts)				
TYPE	WIDTH	HEIGHT	SILL LVL	LINTEL LVL
D	0.75	2.10	+00	+2.10
DW1	2.10	2.10	+00	+2.10
W	2.22	1.20	+0.90	+2.10
V	0.60	0.60	+2.25	+2.85

**GFC**  
**Renu Khanna & Associates**  
architect, engineers, interiors & landscape planner  
#138, sec-10, Panchkula, Har yana India-134109  
Ph. +91-172-2563379 Fax. +91-172-2584538  
email: renukhanna.architect@yahoo.com  
<http://www.architectrenukhanna.com/>

- COMPLETION STAGE  CONSTRUCTION STAGE
- TENDER STAGE  CONCEPTUAL STAGE

SUFFIX	DATE	INITIALS	DETAILS

**REVISIONS**

**DRAWING TITLE**  
GATE POST  
TOILET, SECTION & JOINERY DETAIL

**Job No.** WD/AV/SP-02  
**Scale** 01-06-2018  
**Issue** Revision 01  
**Drawn** DEBIT  
**Checked** P. COOR.  
**Scale** R2

**Copyright**  
THIS DRAWING IS THE PROPERTY OF RITES LTD. IT SHALL NOT BE REPRODUCED, COPIED, USED IN ANY MANNER OR HANDED OVER TO ANY OTHER PERSON OR PARTY, WITHOUT THE PRIOR PERMISSION OF RITES LTD.

PROJECT PROPONENT  
**BHOGAPURAM INTERNATIONAL AIRPORT CORPORATION LIMITED**  
 (BIACL) GOVT. OF A.P.

JOB TITLE  
**DEVELOPMENT OF GREEN FIELD AIRPORT AT ORVAKALLU (KURNOOL), A.P., FOR DAY VFR OPERATIONS OF ATR 72 AIRCRAFT**

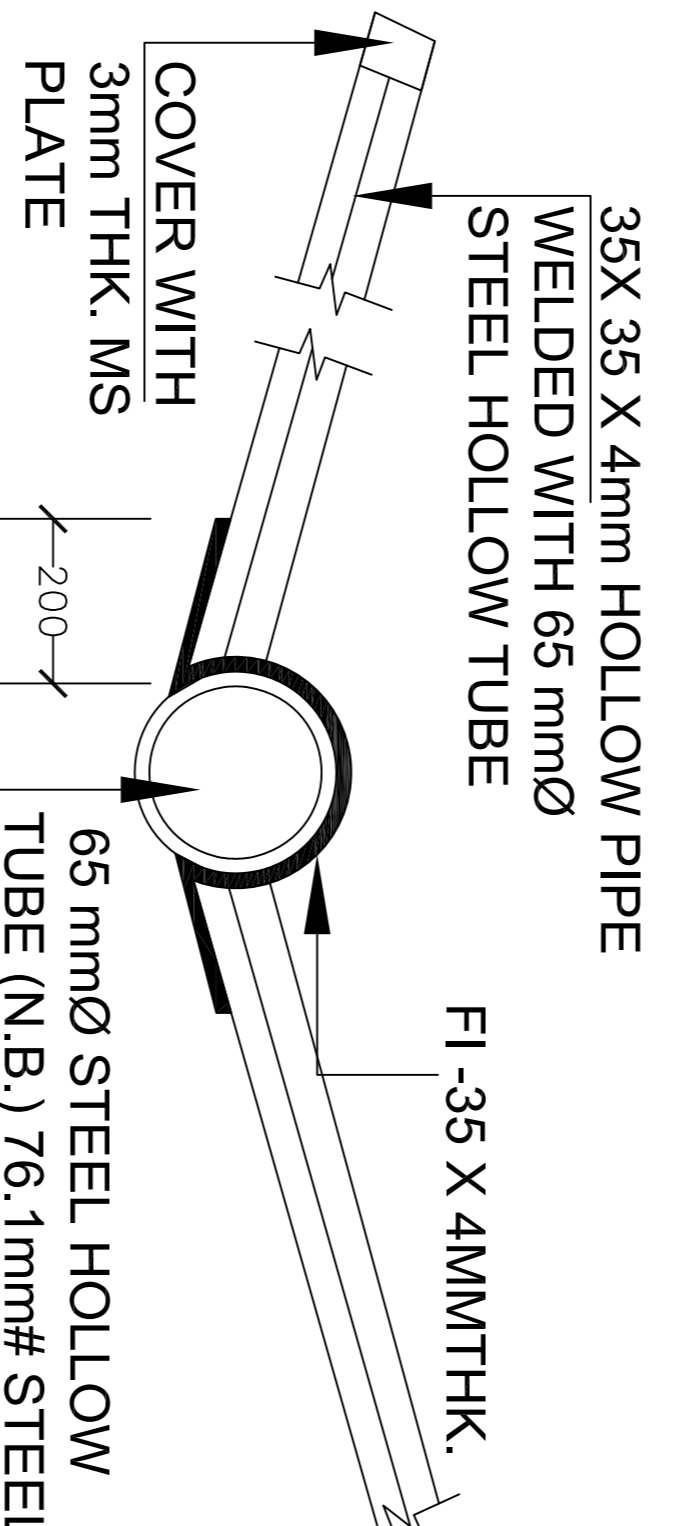
CONSULTANT  
**PRITES**  
 THE INFRASTRUCTURE PEOPLE  
 AIRPORTS DIVISION  
 (ISO - 9001 CERTIFIED)

NOTES:-

1. ALL DIMENSIONS ARE IN MILLIMETERS UNLESS NOTED OTHERWISE.
2. WRITTEN DIMENSIONS ARE TO BE FOLLOWED. DRAWINGS ARE NOT TO BE SCALED.
3. ANY DISCREPANCY IN THE DRAWING SHALL BE BROUGHT TO THE NOTICE OF THE ENGINEER.
4. THIS DRAWING SHALL BE READ IN CONJUNCTION WITH OTHER RELEVANT DRAWINGS.

**35 X 35 X 4mmthk. @4.2kg/m HOLLOW PIPE WELDED WITH 65mmØ STEEL HOLLOW TUBE**

DETAIL AT B



DETAIL AT A

**Renu Khanna & Associates**  
 architect, engineers, interiors & landscape planner  
 #138, sec-10, Panchkula, Haryana  
 India-134109  
 Ph. - +91-172-2563379 Fax. - +91-172-2564538  
 email: renukhanna.architect@ahoo.com  
<http://www.architectsrenukhanna.com/>

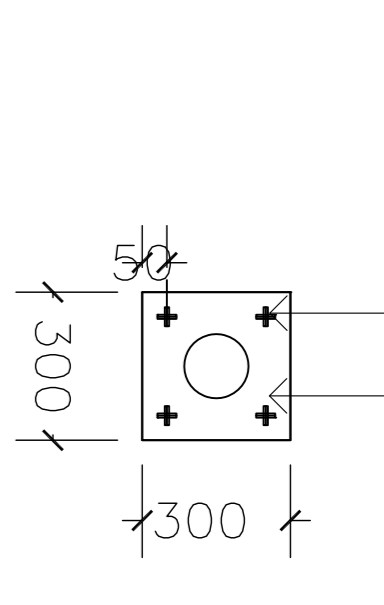
- COMPLETION STAGE
- CONSTRUCTION STAGE
- TENDER STAGE
- CONCEPTUAL STAGE

DRAWING TITLE  
**GATE FOUNDATION DETAIL**

SUFFIX	DATE	INITIALS	DETAILS

Job. No. \_\_\_\_\_ Date \_\_\_\_\_  
 Scale \_\_\_\_\_  
 NTS 01-06-2018  
 DRAWN \_\_\_\_\_  
 CHECKED BY \_\_\_\_\_  
 P. COORD. \_\_\_\_\_  
 R2

20MM #H.D. BOLTS 700 LONG

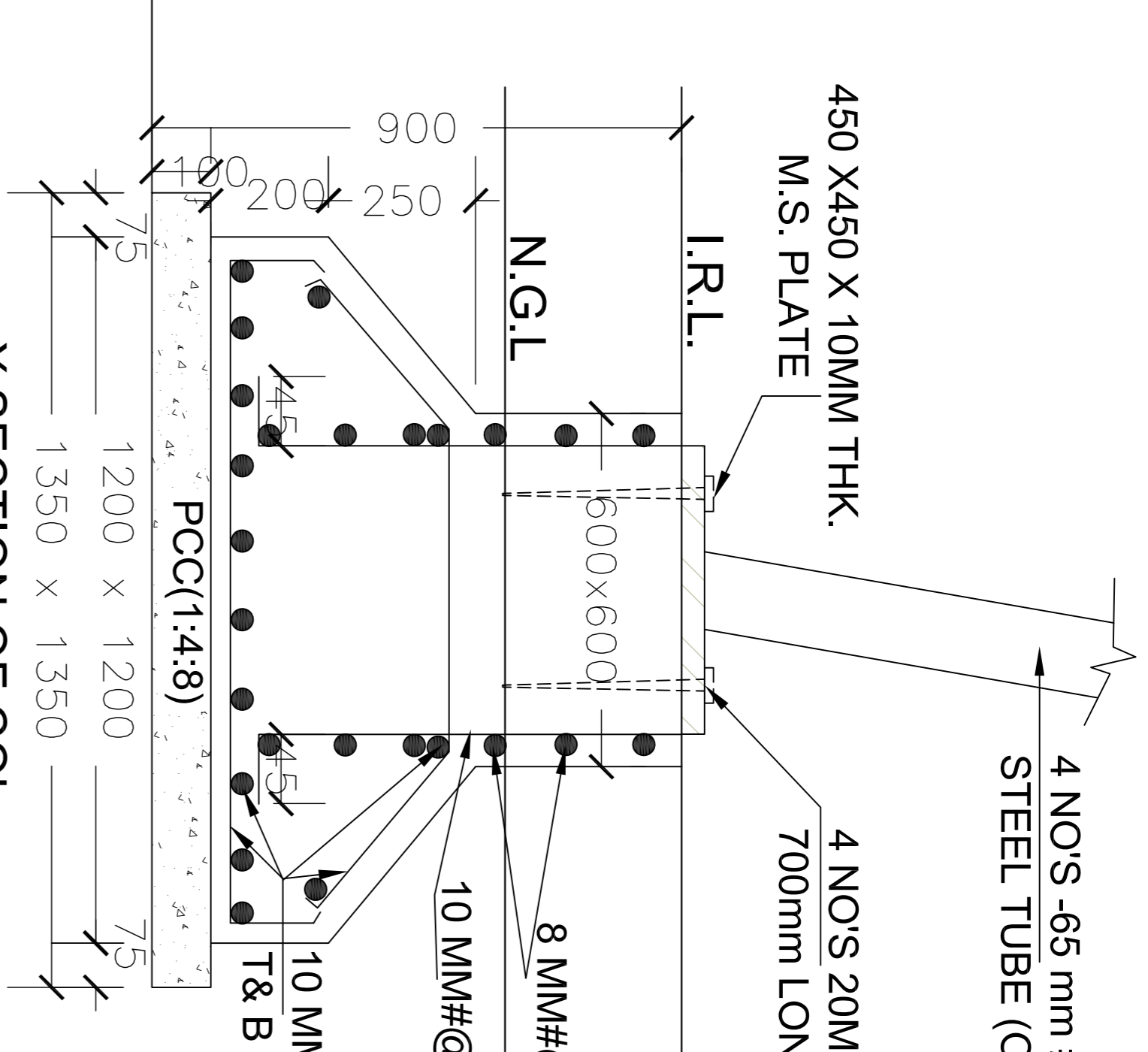


4 NOS - 65 mm # STEEL TUBE (N.B.) 76.1mm# STEEL TUBE (O.D.) @ 6.53 KG/M.

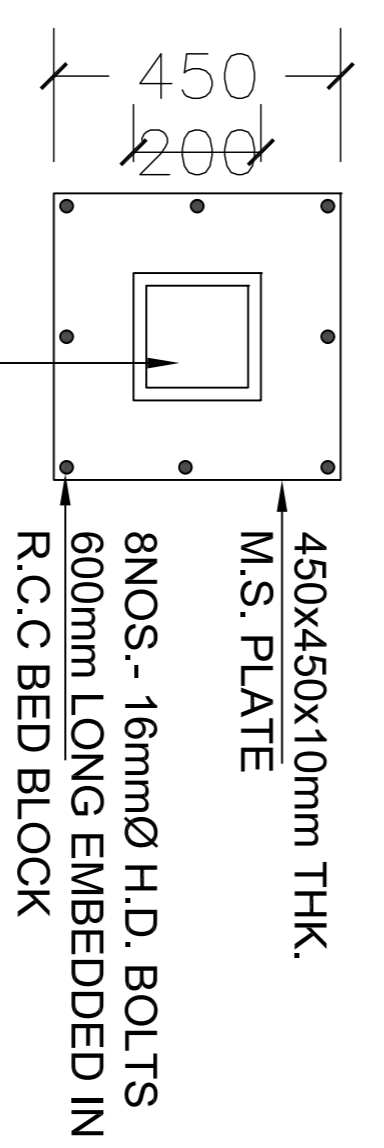
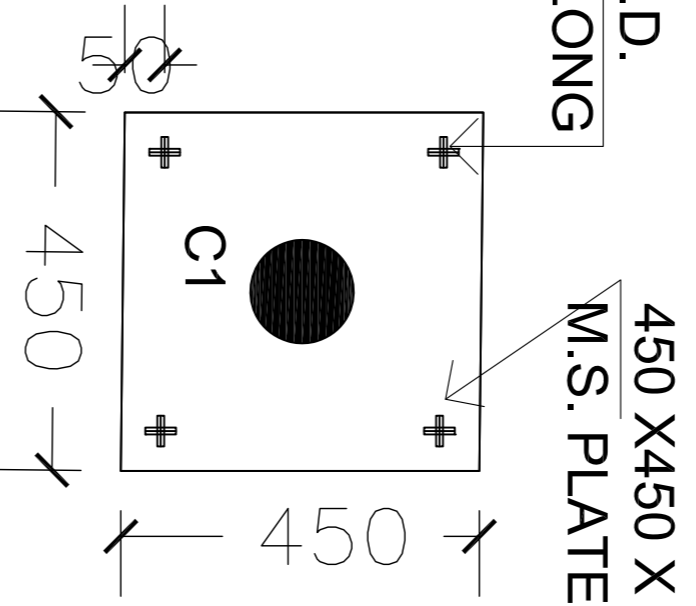
4 NOS 20MM#H.D. BOLTS 700mm LONG EMBEDDED IN R.C.C.

450 X 450 X 10MM THK. M.S. PLATE

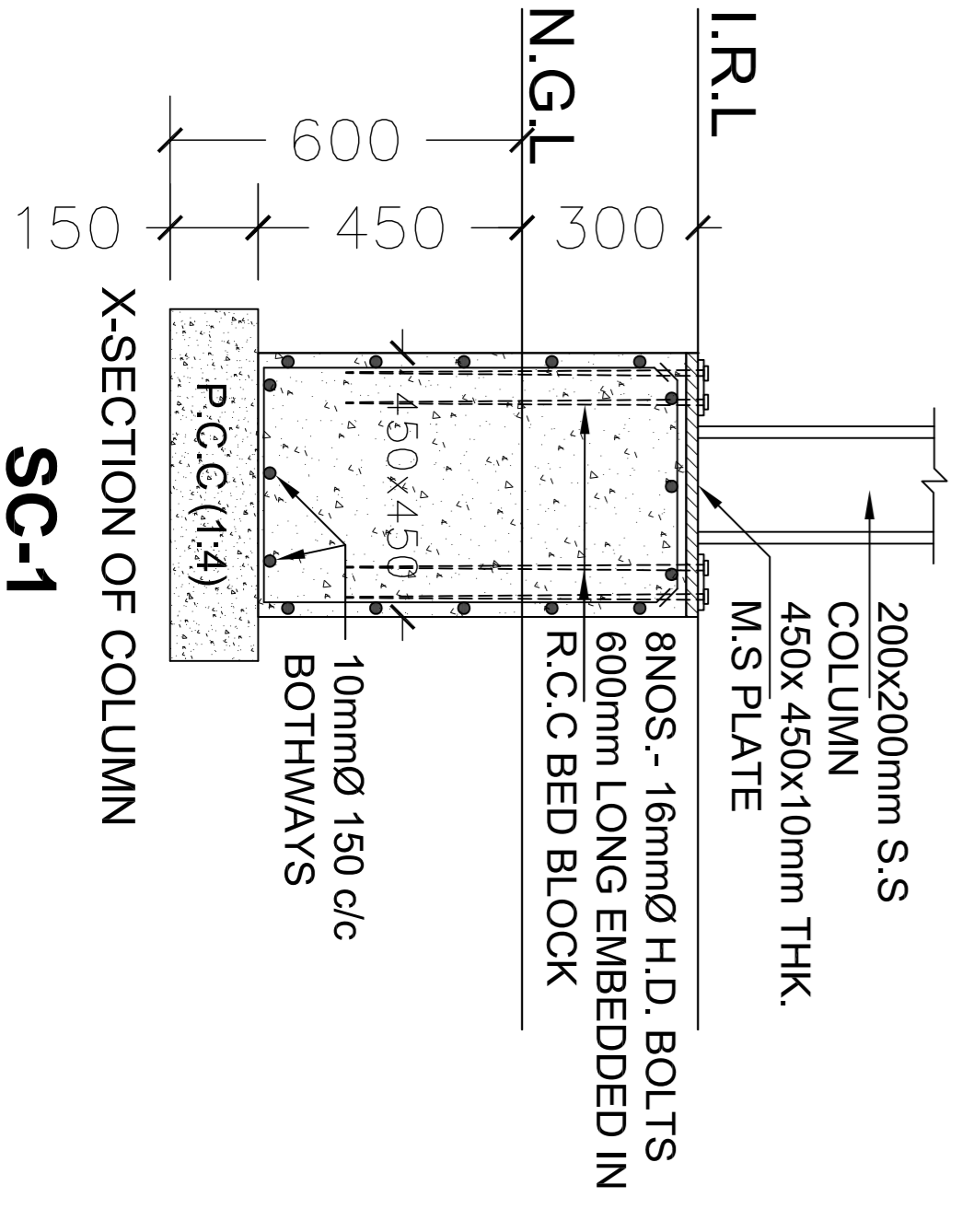
X SECTION OF COL. FOUNDATION C1



FOUNDATION C1 PLAN

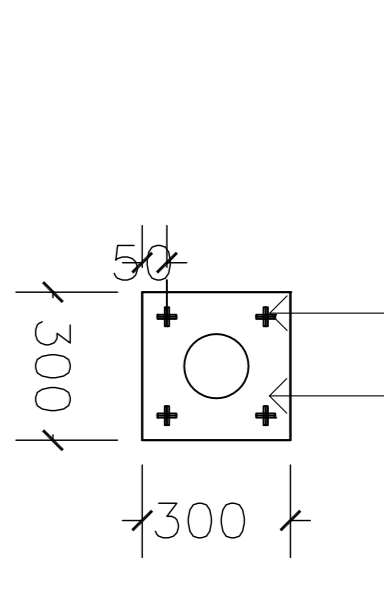


PLAN



X-SECTION OF COLUMN SC-1

300 X 300 X 10MM THK. M.S. PLATE

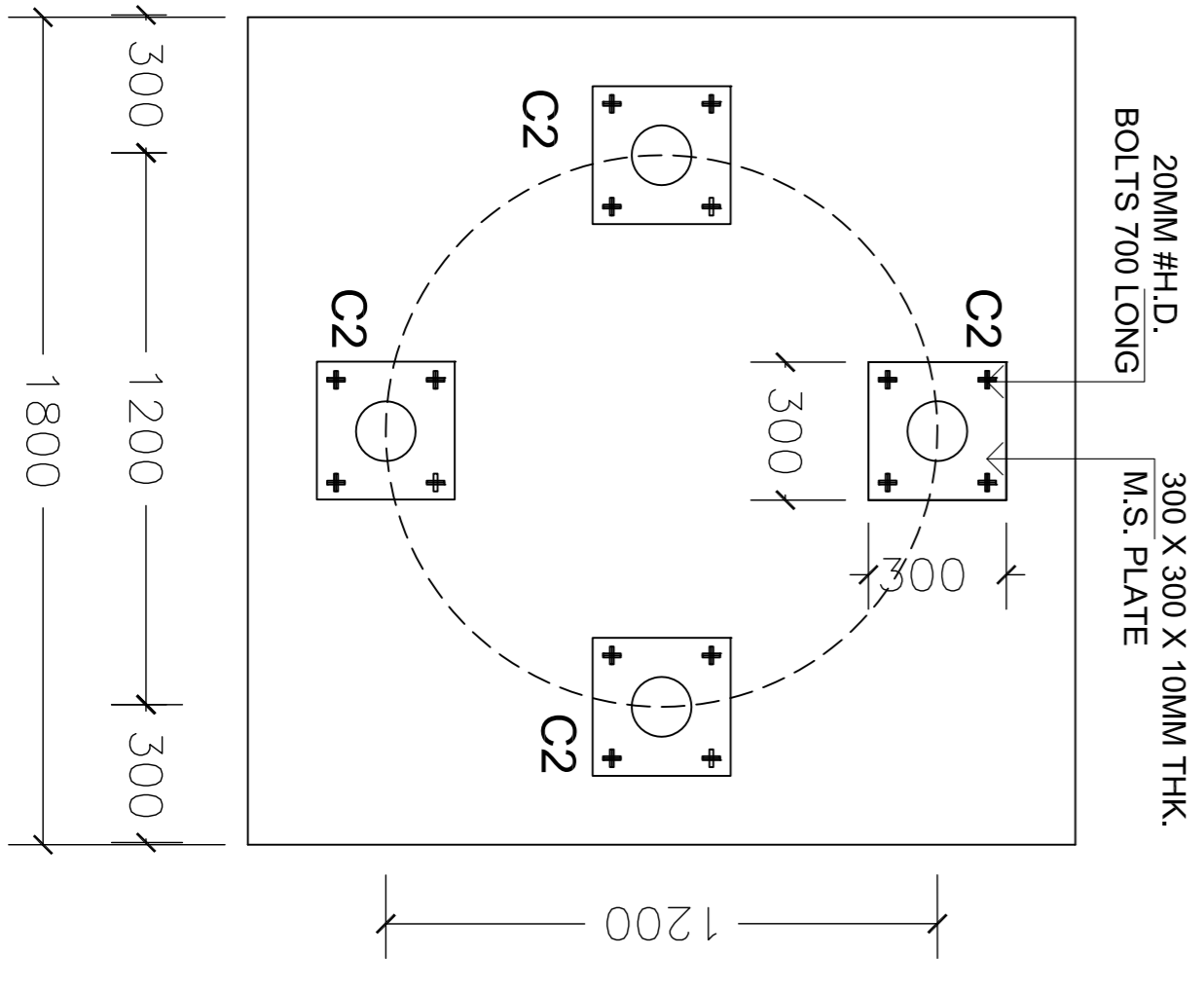


4000

4 NOS - 65 mm # STEEL TUBE (N.B.) 76.1mm# STEEL TUBE (O.D.) @ 6.53 KG/M WITH ACP CLADDING

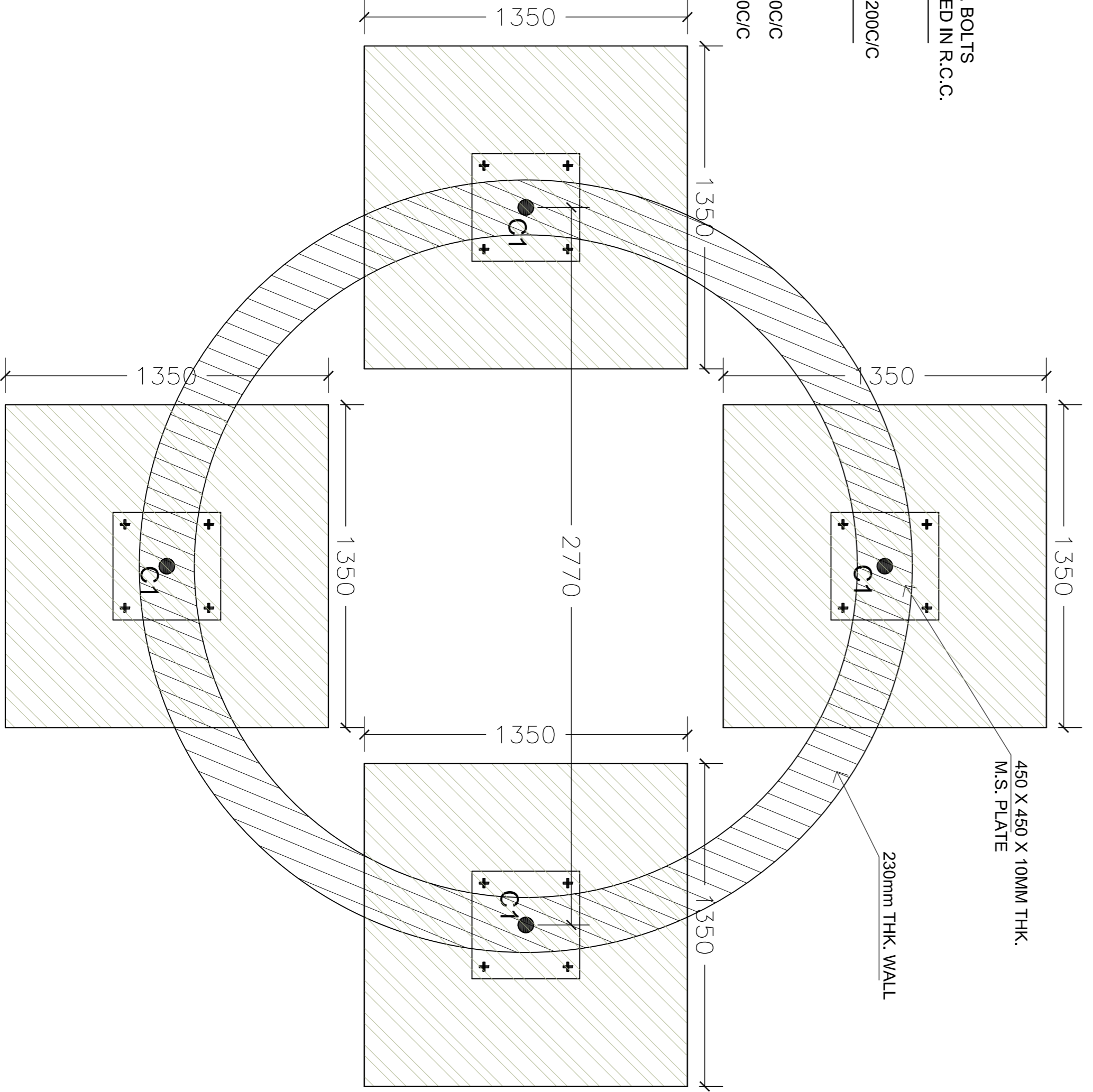
300 X 300 X 10MM THK. M.S. PLATE  
 4 NOS 20MM#H.D. BOLTS 700 LONG EMBEDDED IN R.C.C.  
 8 MM# @ 200C/C  
 10 MM# @ 150C/C  
 10 MM# @ 150C/C  
 10 MM# @ 150C/C

X-SECTION OF COLUMN



PLAN

SECURITY POST FOUNDATION PLAN



PROJECT PROPONENT  
**BHOGAPURAM INTERNATIONAL AIRPORT CORPORATION LIMITED**  
 (BACL) GOVT. OF A.P.

JOB TITLE  
**DEVELOPMENT OF GREEN FIELD AIRPORT AT ORVAKALLU (KURNOOL), A.P., FOR DAY VFR OPERATIONS OF ATR 72 AIRCRAFT**

CONSULTANT  
  
**IRITES**  
 THE INFRASTRUCTURE PEOPLE  
 AIRPORTS DIVISION  
 (ISO - 9001 CERTIFIED)

- NOTES:-
1. ALL DIMENSIONS ARE IN MILLIMETERS UNLESS NOTED OTHERWISE.
  2. WRITTEN DIMENSIONS ARE TO BE FOLLOWED. DRAWINGS ARE NOT TO BE SCALED.
  3. ANY DISCREPANCY IN THE DRAWING SHALL BE BROUGHT TO THE NOTICE OF THE ENGINEER.
  4. THIS DRAWING SHALL BE READ IN CONJUNCTION WITH OTHER RELEVANT DRAWINGS.

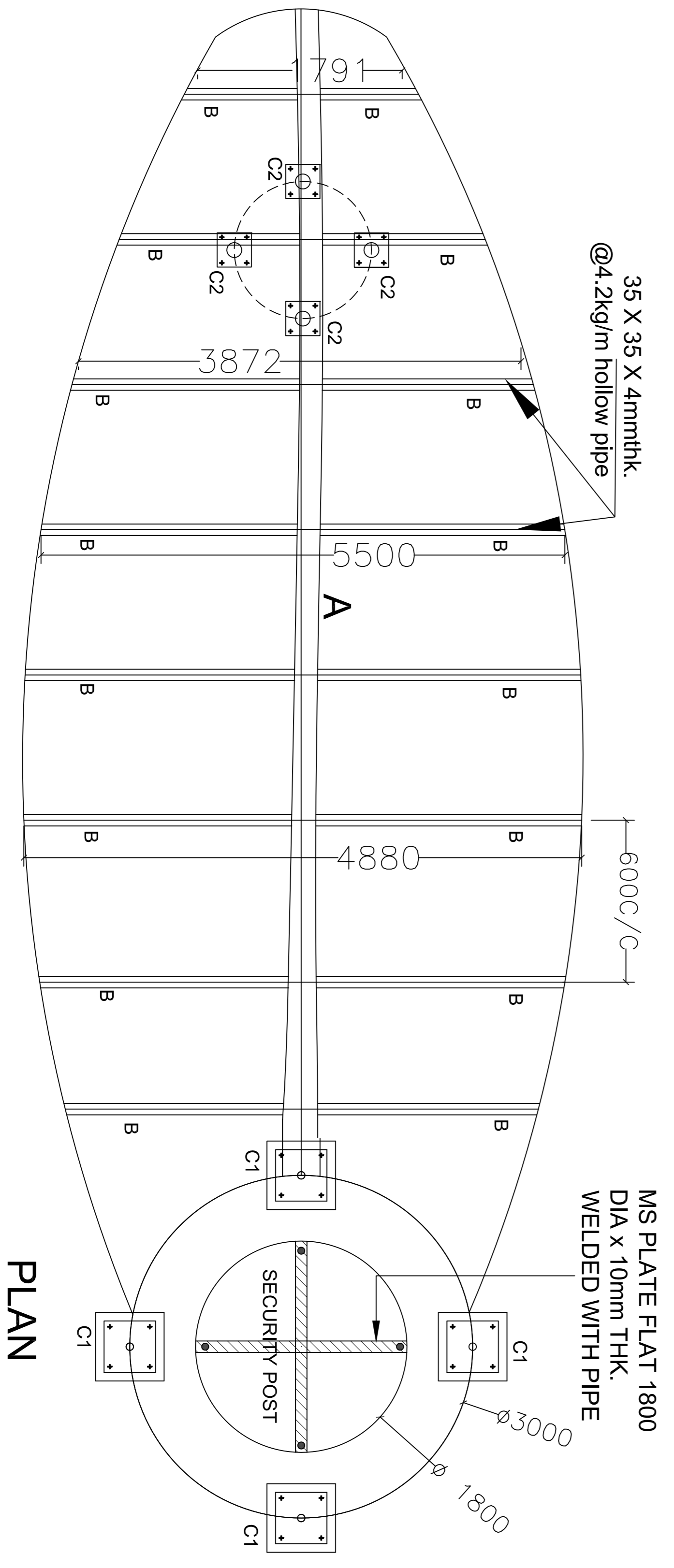
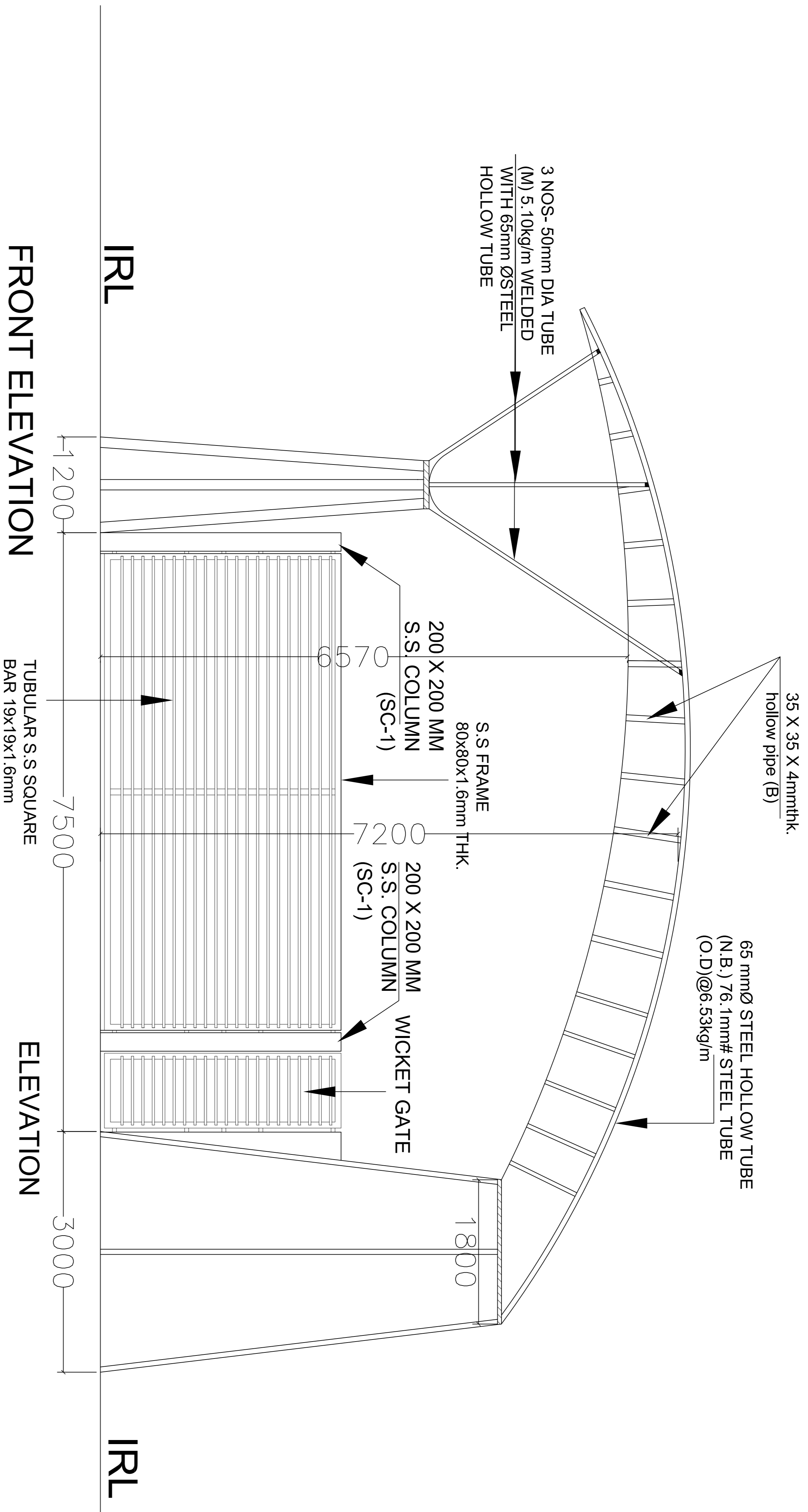
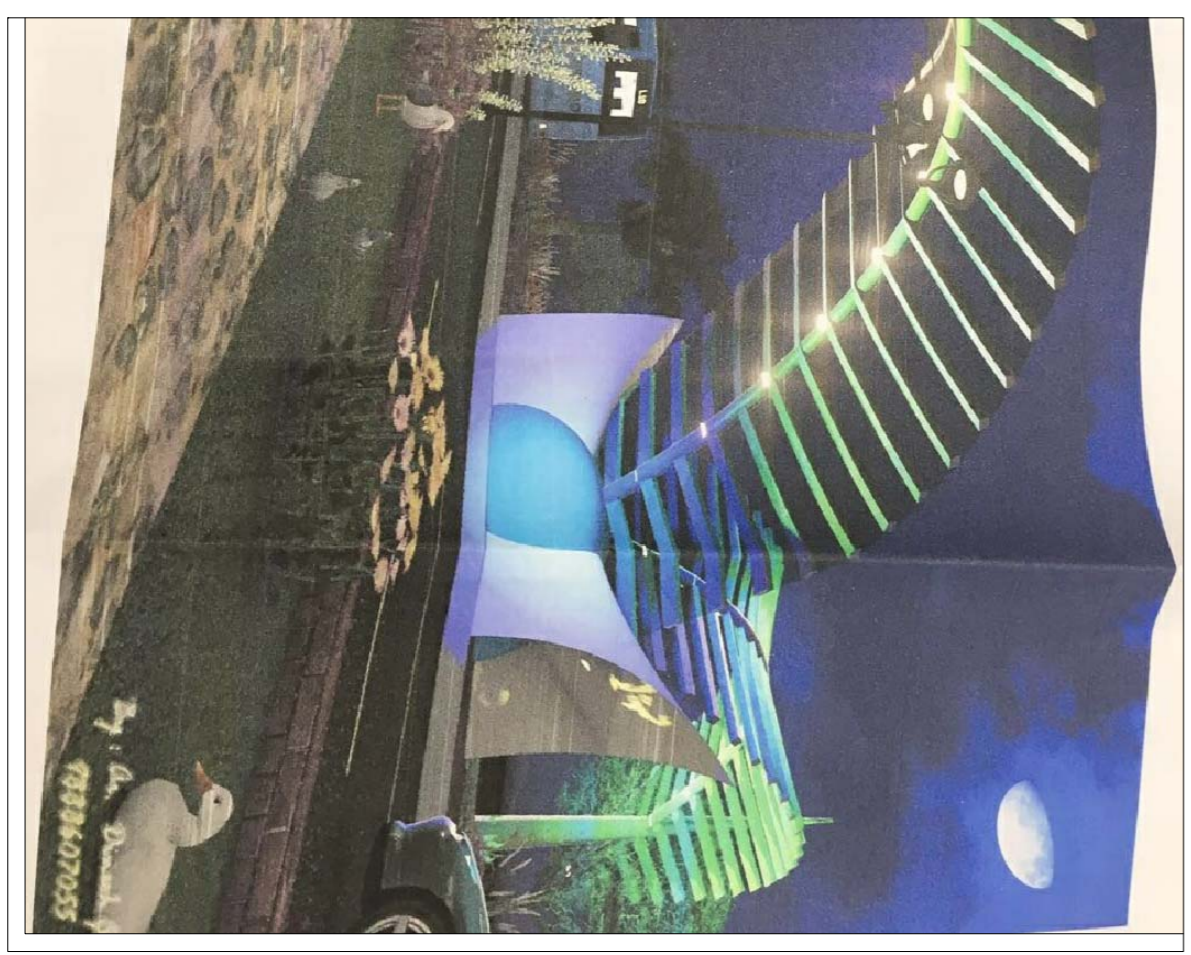
**Renu Khanna & Associates**  
 architect, engineers, interiors & landscape planner  
 #138, sec-10, Panchkula, Haryana India-134109  
 Ph. - +91-172-2563379 Fax - +91-172-2564538  
 email: renukhanna.architect@yahoo.com  
<http://www.architectsrenukhanna.com/>

COMPLETION STAGE     CONSTRUCTION STAGE  
 TENDER STAGE         CONCEPTUAL STAGE

SUFFIX	DATE	INITIALS	DETAILS

REVISIONS  
 DRAWING TITLE  
**GATE STRUCTURE DETAIL**

Job. No.	Date	Dwg. No.	WD/SI-02
Scale	Revision Suffix		
NTS	01-06-2018		
DRAWN	DEALT	CHECKED BY	P.COORD.
			<b>R2</b>



COPYRIGHT  
 THIS DRAWING IS THE PROPERTY OF IRITES LTD. IT SHALL NOT BE REPRODUCED, COPIED, USED IN ANY MANNER OR PASSED OVER TO ANY OTHER PERSON OR PARTY, WITHOUT THE PRIOR PERMISSION OF IRITES LTD.