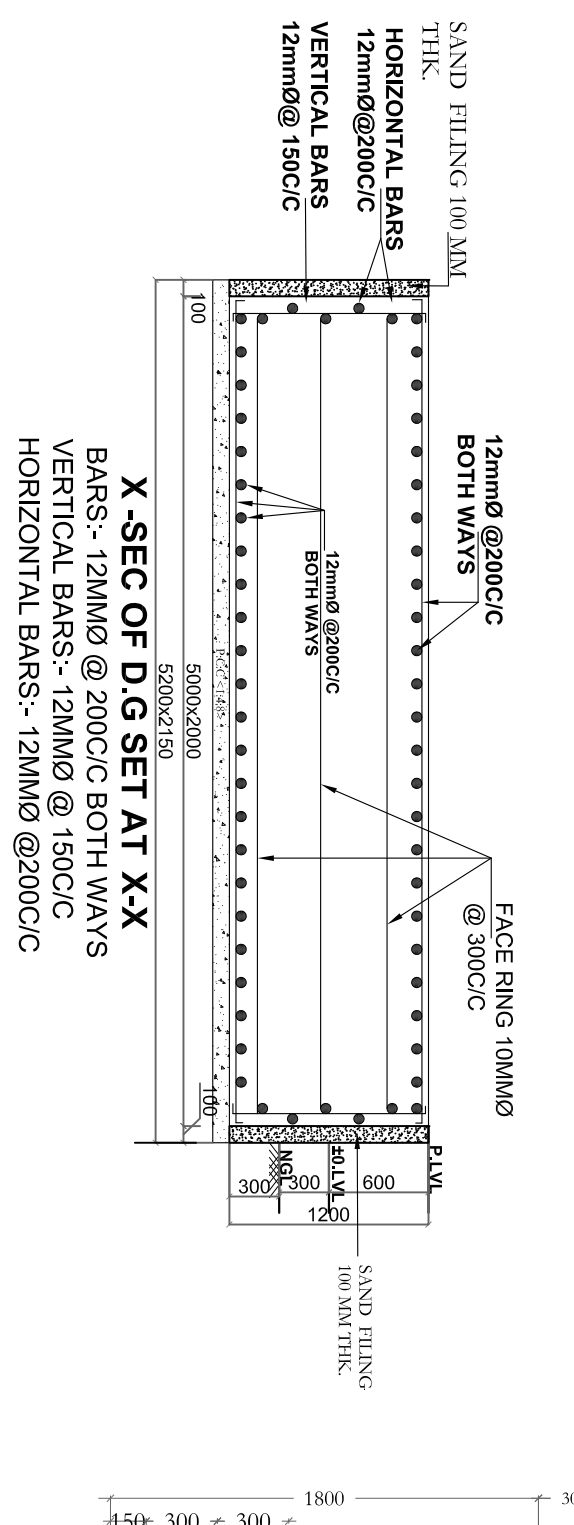


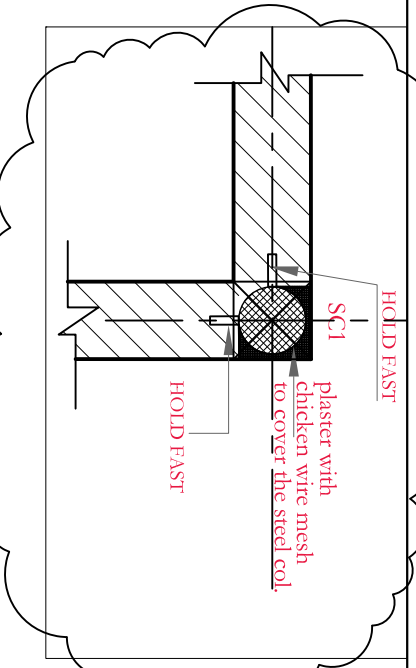
STEEL COLUMNS TRUSS FOUNDATION PLAN

2000MM WD CANOPY PROJ. OF 4M LEVEL



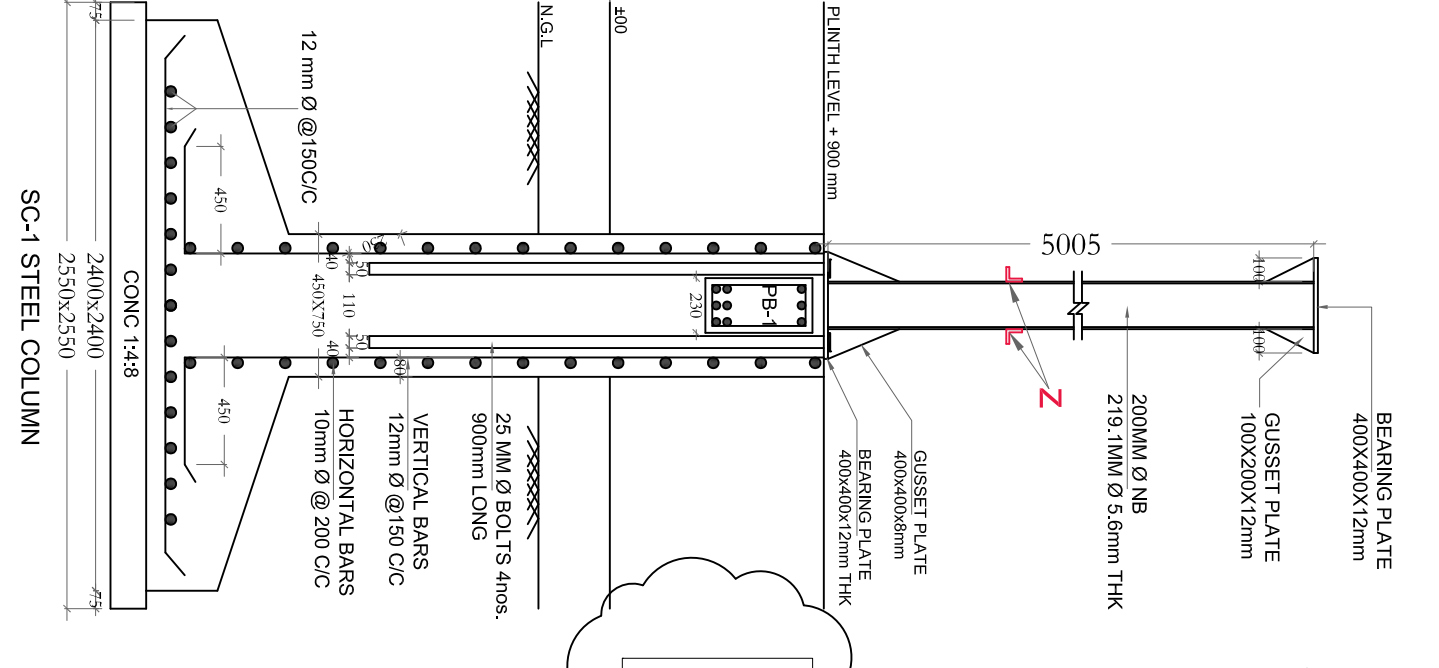
X-SEC OF D.G SET AT X-X

BARS:- 12MMØ @ 200C/C BOTH WAYS
 VERTICAL BARS:- 12MMØ @ 150C/C
 HORIZONTAL BARS:- 12MMØ @ 200C/C



SC-1 STEEL COLUMN PLAN

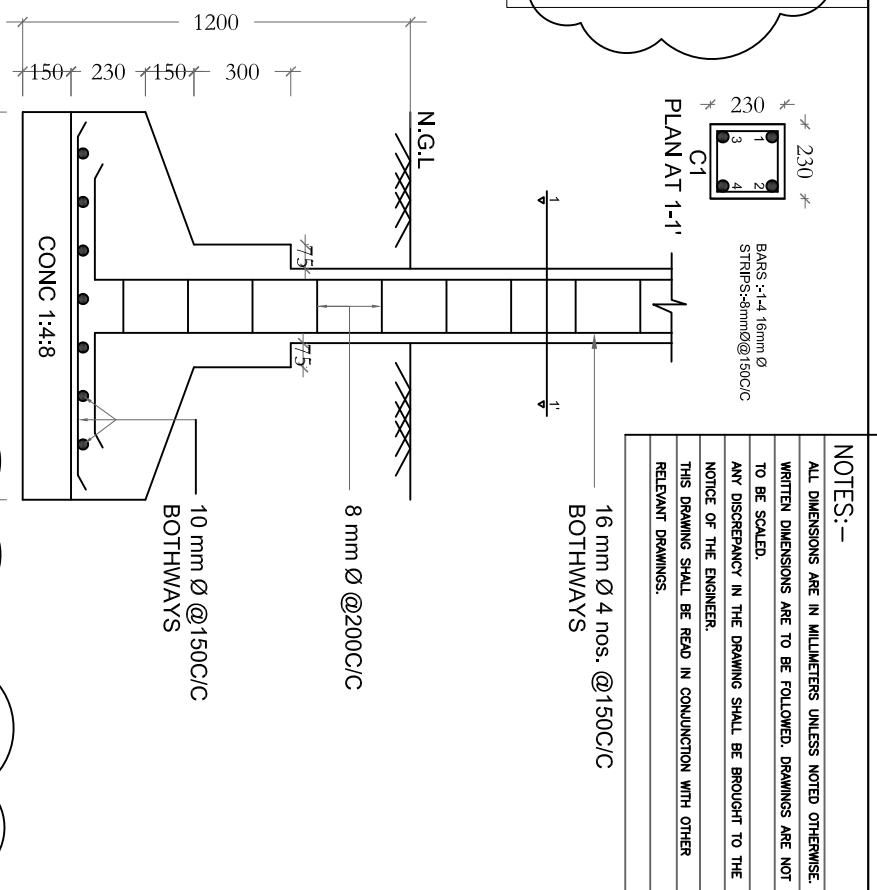
plaster with chicken wire mesh to cover the steel col.
 HOLD FAST



SC-1 STEEL COLUMN

REVISION:-
 The height of sc-1 col. from P.L. +900 to truss bottom lvl. is 5005 in stead of 2045 as shown in sc-1 col section

NOTE: For brick wall with pipe 200mm Ø every 3rd course of brick will be laid with F.1. (L) hold fast 75 x 75 x 3mm th. and welded with pipe on both side



PLAN AT 1'-1'

NOTES:-
 ALL DIMENSIONS ARE IN MILLIMETERS UNLESS NOTED OTHERWISE.
 WRITTEN DIMENSIONS ARE TO BE FOLLOWED. DRAWINGS ARE NOT TO BE SCALED.
 ANY DISCREPANCY IN THE DRAWING SHALL BE BROUGHT TO THE NOTICE OF THE ENGINEER.
 THIS DRAWING SHALL BE READ IN CONJUNCTION WITH OTHER RELEVANT DRAWINGS.

REVISIONS NO.-1 PROJECT PROPONENT BHOGAPURAM INTERNATIONAL AIRPORT CORPORATION LIMITED (BIACL) GOVT. OF A.P. CONSULTANT ORBITES THE INFRASTRUCTURE PEOPLE AIRPORTS DIVISION (ISO - 9001 CERTIFIED)	JOB TITLE DEVELOPMENT OF GREEN FIELD AIRPORT AT ORVAKALLU (KURNOOL), A.P. FOR DAY VFR OPERATIONS OF ATR 72 AIRCRAFT	DRAWING TITLE TRUSS FRAMING PLAN	Job No. Date Scale Revision Suffix	DRG. No. W/D/ESS/S-02 Date Revision Suffix	DRG. No. W/D/ESS/S-02 Date Revision Suffix
---	---	--	---	---	---

Renu Khanna & Associates
 Architects & Engineers
 #138, sec-10, Panichulla, Hyderabad
 India-504109
 Ph. +91-1725658379 Fax. +91-1725684698
 email: renukhannaarchitects@gmail.com
 http://www.architectrenukhanna.com/

THIS DRAWING IS THE PROPERTY OF RITES LTD. IT SHALL NOT BE REPRODUCED, COPIED, USED IN ANY MANNER OR HANDED OVER TO ANY OTHER PERSON OR PARTY, WITHOUT THE PRIOR PERMISSION OF RITES LTD.